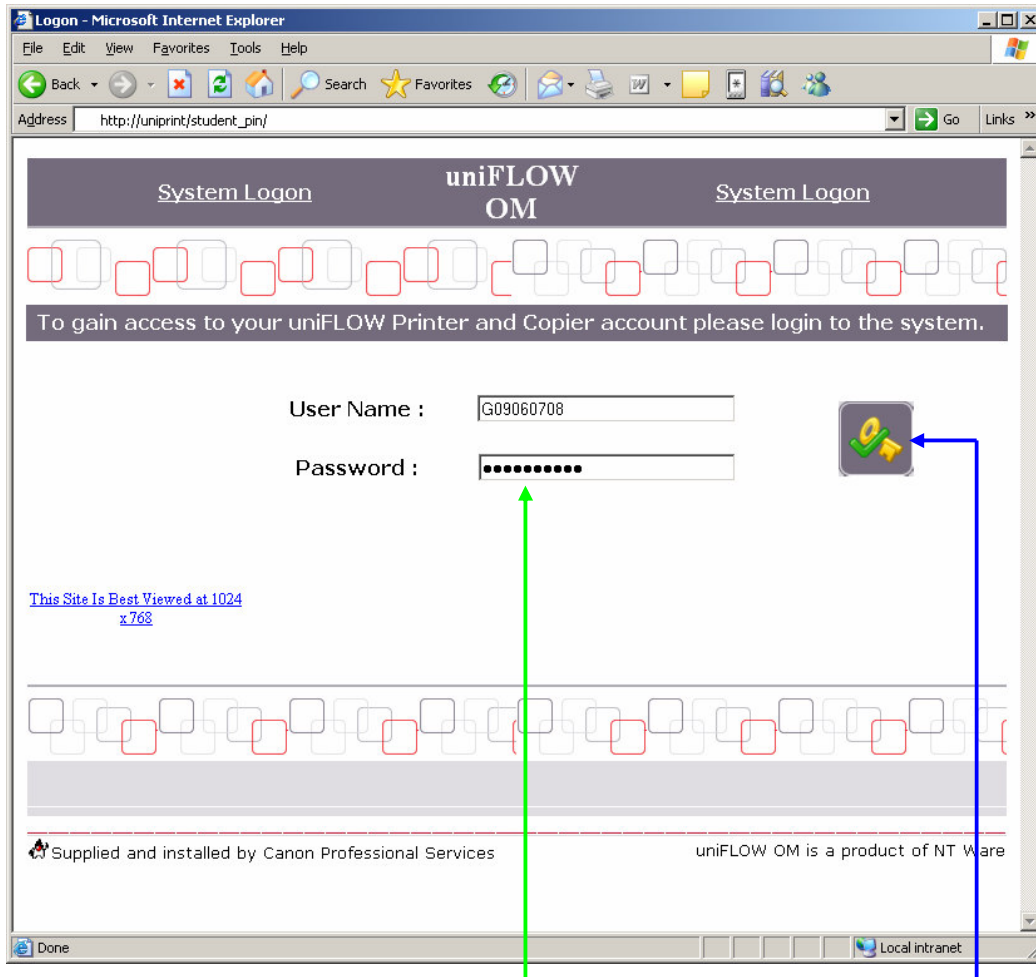


Setting up a Student PIN number

To set up your PIN number for the new print system you need to log on to the internet from a university PC and go to http://uniprint/student_pin



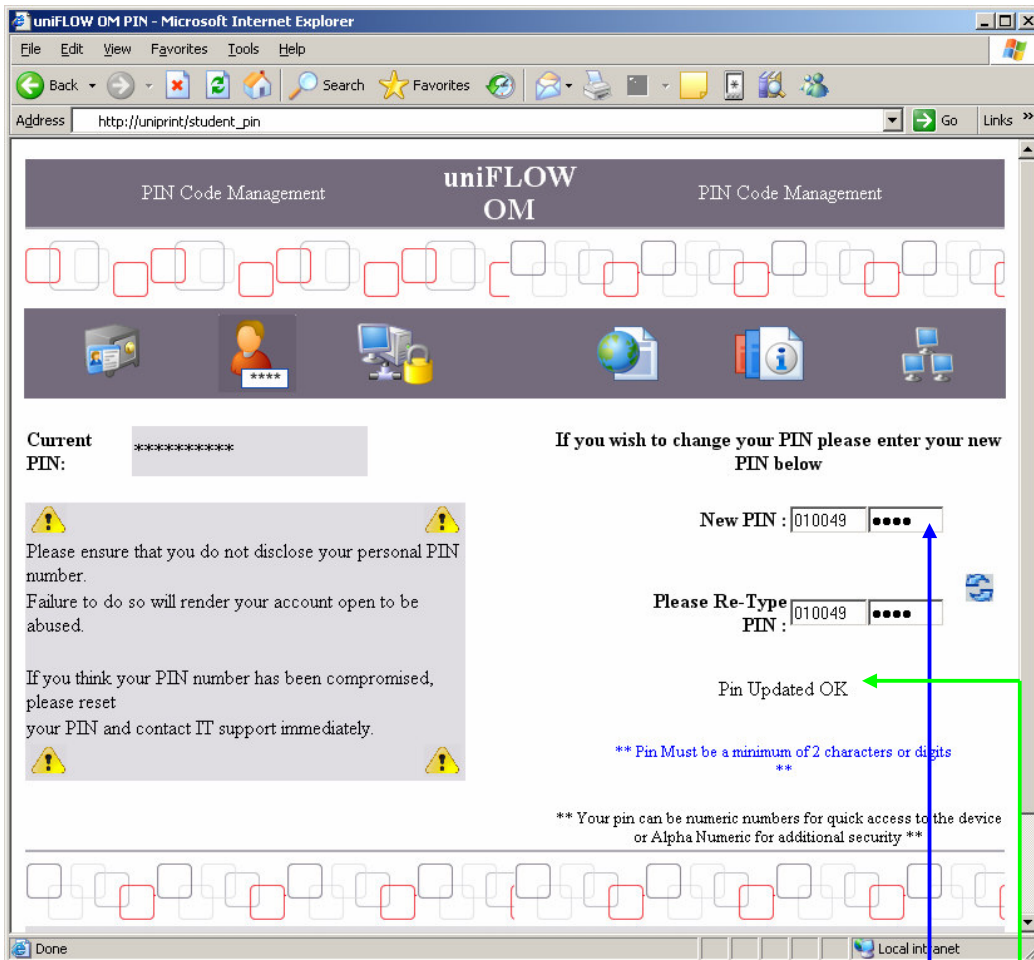
Type in your network login ID in the User Name: box and then your network password (the same as you use to log onto the pcs normally)

Now click on the log in button




From the new page click on the PIN select icon:

This will take you to the PIN selection page...



Chose a PIN number of between 2 an 4 numbers and type it into the blank space, to confirm this PIN you must type it again a second time in the second space.

Now click on the  icon to set your PIN number, if you are successful a message will appear to tell you that the PIN was updated OK.

If this message does not appear repeat the process again.

If you forget your PIN number or just want to change it you can repeat this process as many times as you want. **You can not retrieve your PIN number from the support technicians because they do not have access to this information.**

To log onto a Canon printer you need to type in the last 6 numbers of your student ID and then the PIN number, so if your PIN number is 4 digits you will type in a 10 digit number, then press the login button.